



AWI SHEARING SHED
DESIGN & SAFETY

HENRY RIDGE



PROJECT METHODOLOGY

1. Survey of shearing industry stakeholders
2. Shed evaluation tour
3. Prototype design and workshop
4. Evaluate & trial
5. Development of blueprint
6. Host open day at 'Arrow Park' shearing shed
7. Upload info and blueprint to www.wool.com/sheddesign



SHEARING SHED DESIGN PROJECT

- Aimed to identify components of the shearing shed which:
 - are more efficient for workers and the flow of livestock
 - are safer for workers
 - allow quality wool preparation
 - present minimal risk to the welfare of the livestock



INDUSTRY SURVEY

- Rate impact of design features on criteria:
 - efficiency/flow, safety, quality and welfare



SHED DESIGN TOUR

- Six different shearing sheds
- Working group of 13 shed staff and growers
- All aspects considered
 - Individual design features (e.g. door heights)
 - Overall design and functionality (e.g. board layout)



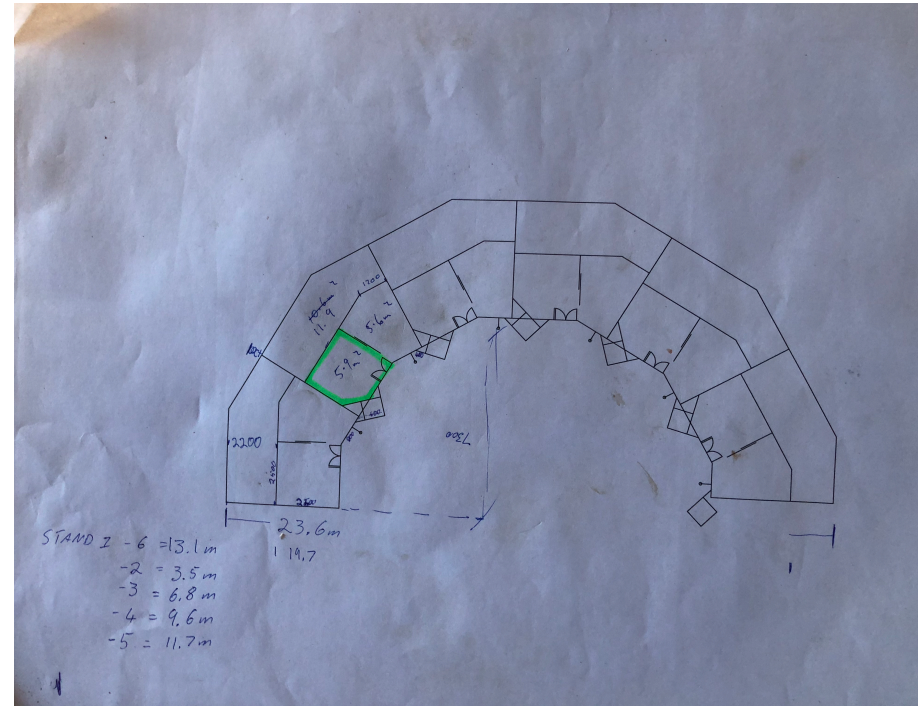
Mock chute for positioning

IDENTIFIED KEY IMPROVEMENTS

- Inefficient pen flow – back fill and pen sizes
- Dragging sheep long distances and around corners
- Small and uninviting chutes/sheep release
- Long and uneven distances between the board, wool tables, wool bins and press(es)
- Improve workplace quality, safety and satisfaction (at workstations and amenities)

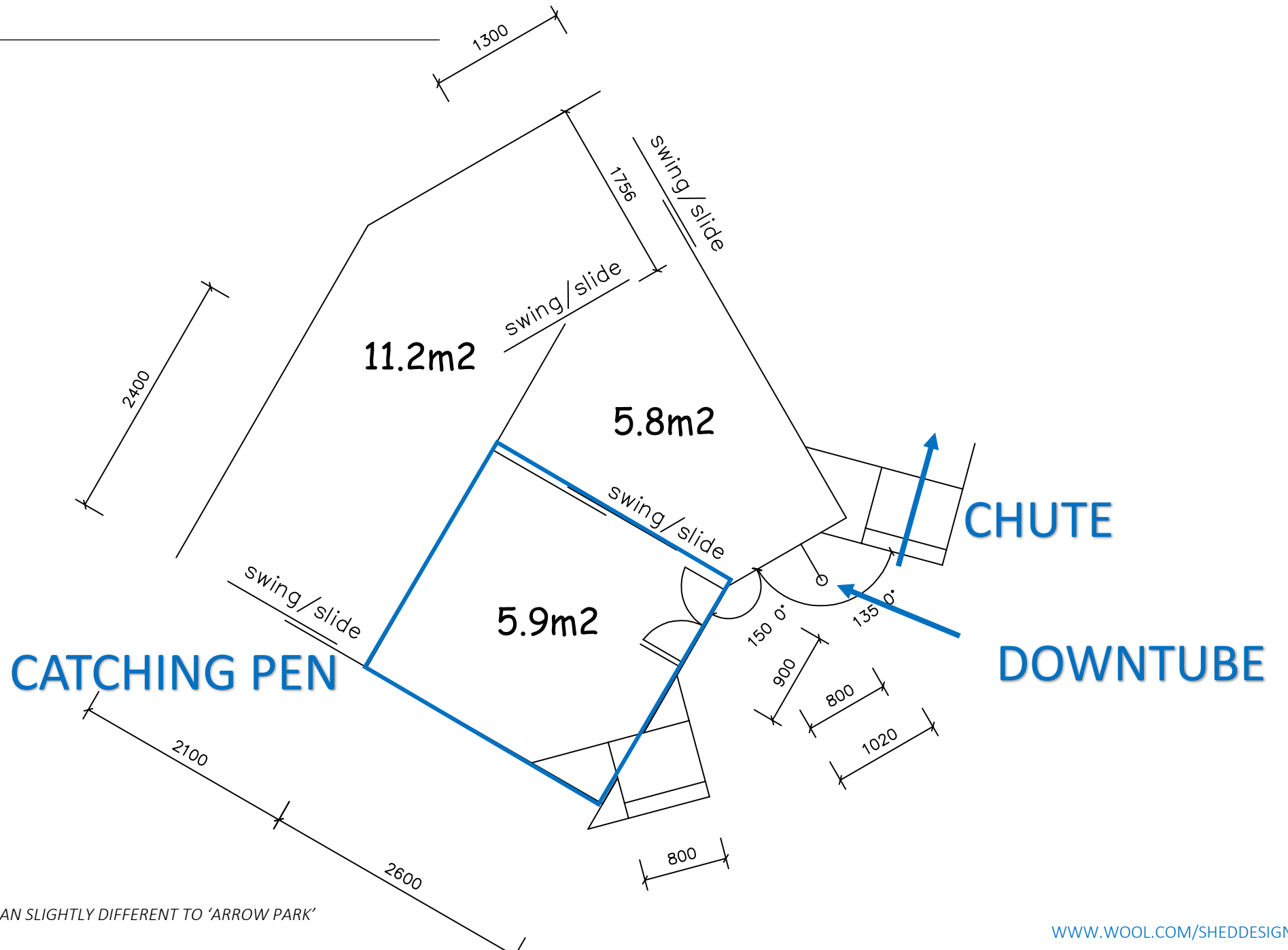


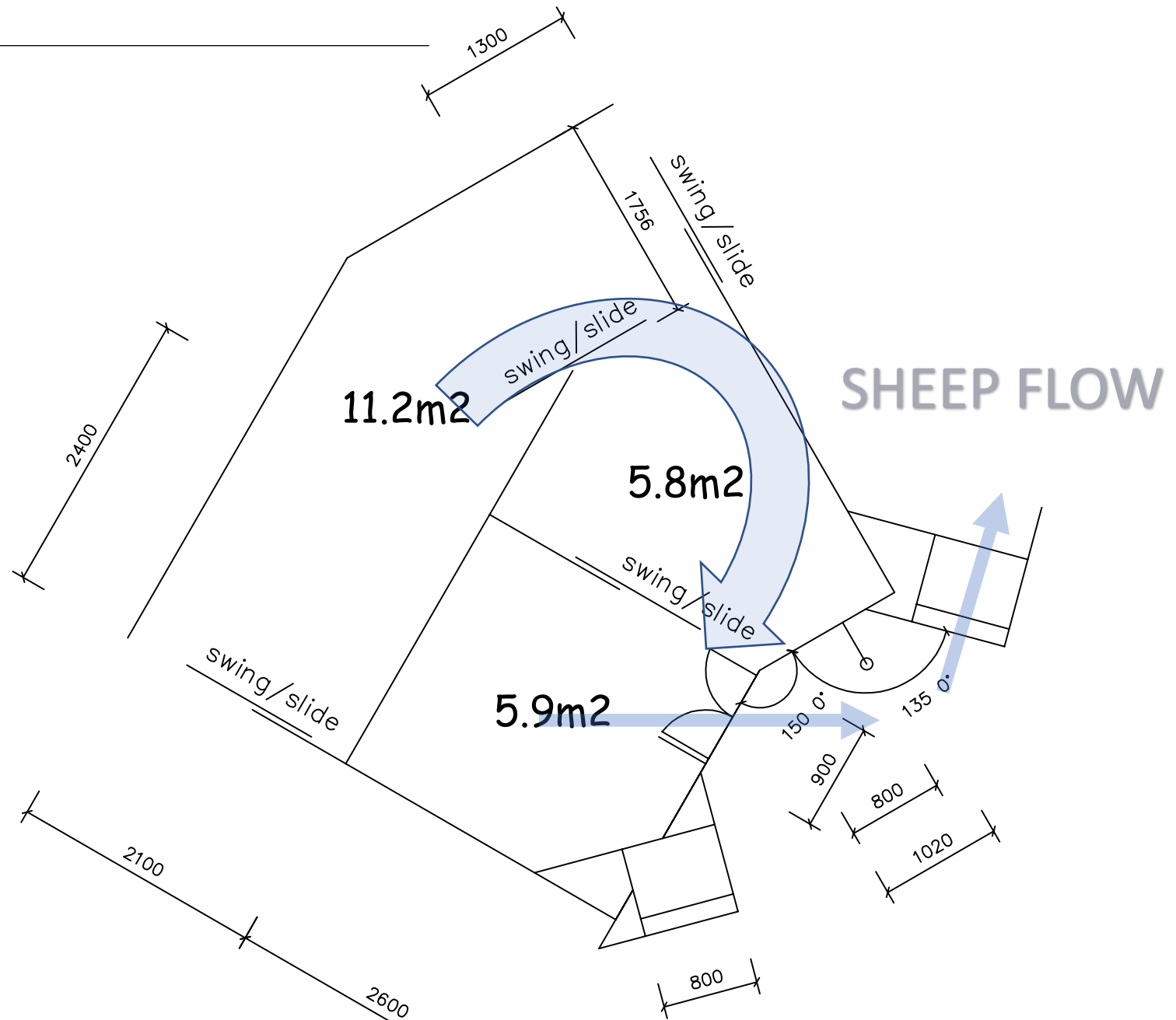
PROTOTYPE DEVELOPMENT

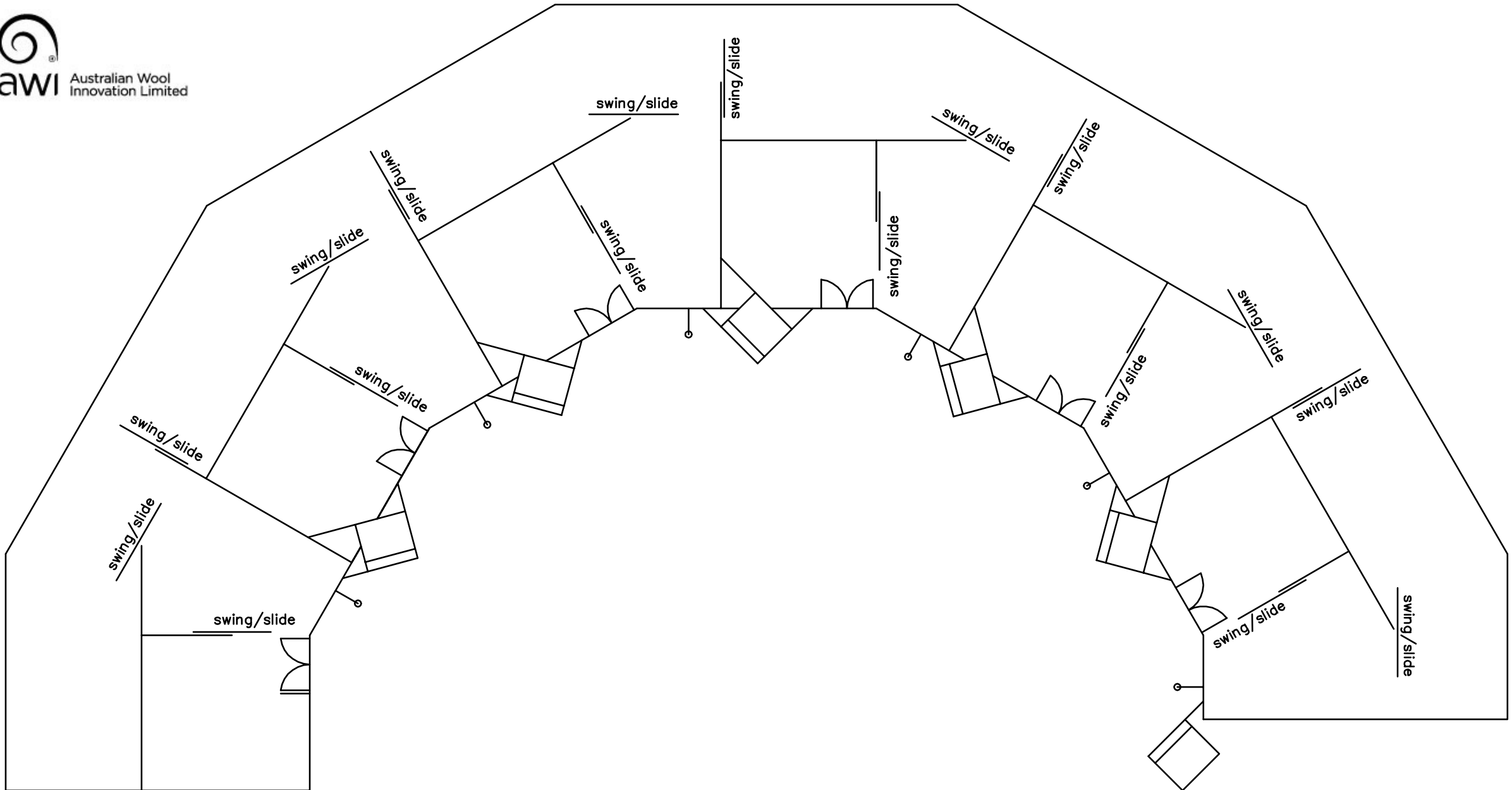
















SHED ENTRY

- Wide ramp and entry providing considerable access
- Walkway and rails
- Soft grip flooring for sure footing



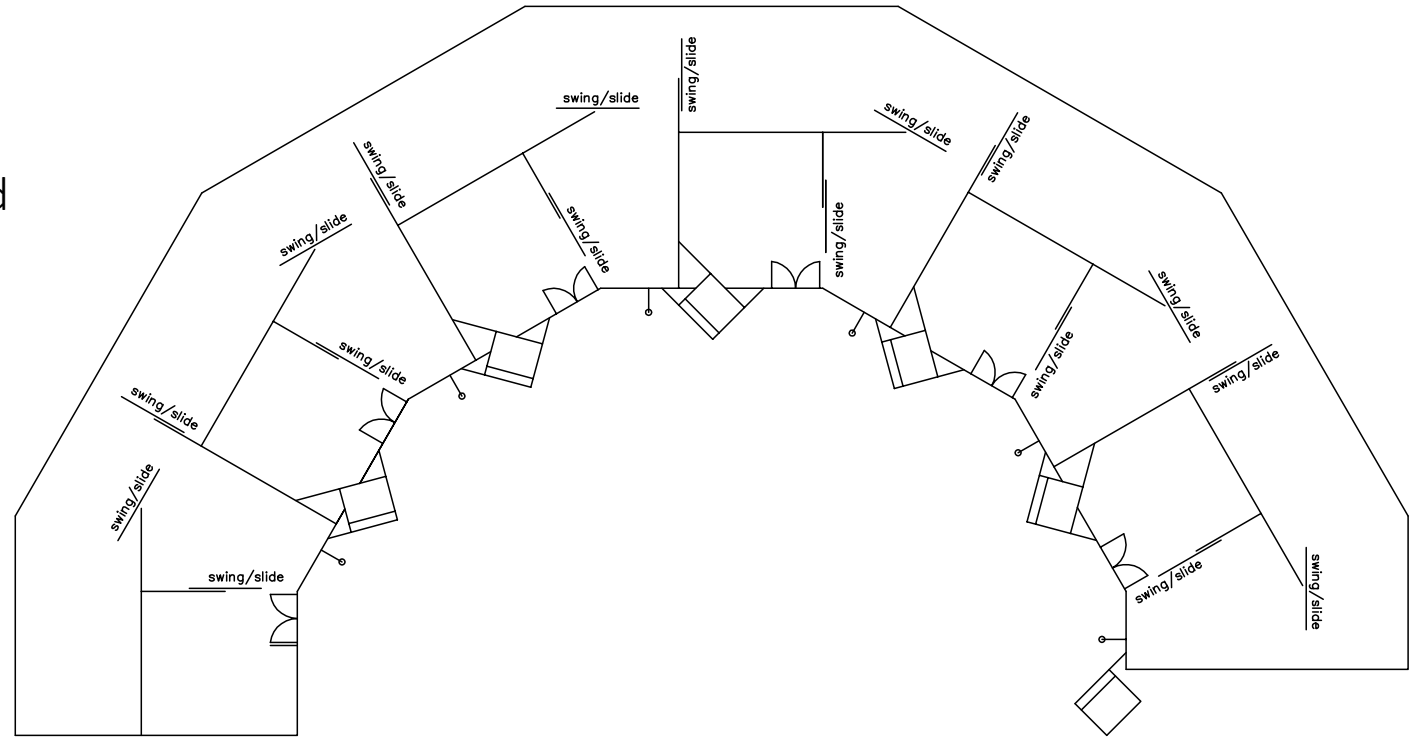
IN-SHED YARDS

- Boarded fence improves flow, welfare and noise
- **Non directional plastic floor for drainage, minimal light penetration**
- In-shed storage and covered external yards
- Wide swing gates and slide/swing



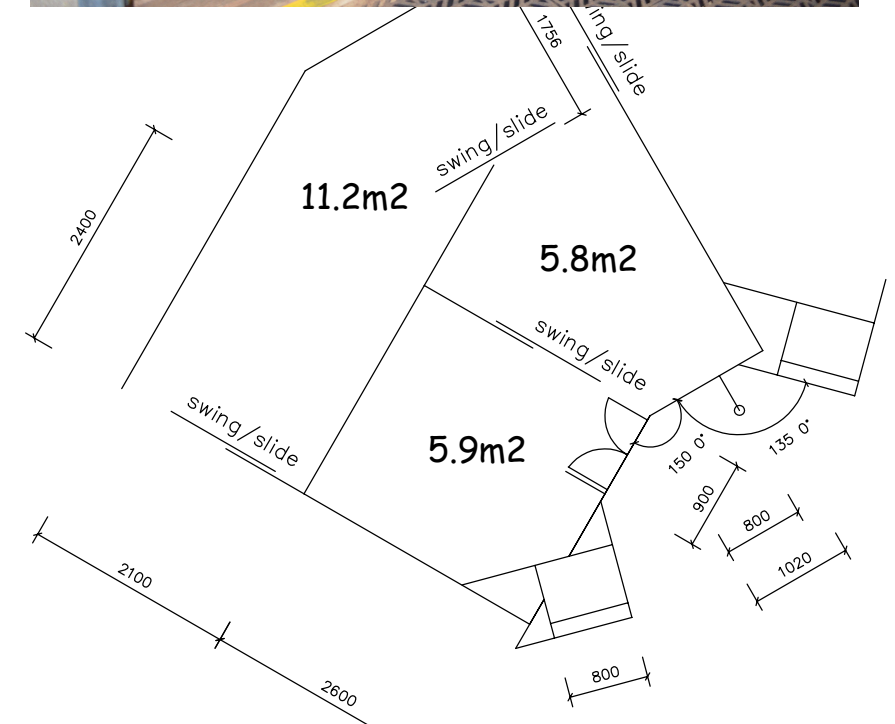
MODULAR DESIGN

- Repeatabe three pen and board modular design
- Horse shoe design minimises distance from stand to wool table/bins/press
- Blueprint and design holds its own structural integrity separate to the shed



CATCHING, FILL AND LANEWAY PENS

- Painted, high visibility step into the catching pen from fill pen
- Front fill, **sloped catching pen** aids filling, presents sheep facing away from shearer, assists with drag
- Timber **slats parallel to path of drag** to assist drag
- Catching pen free from obstacles, such as the chute – allows for shorter pen size
- Logical pen sizing, three pens together hold over 70 head, on average enough for two runs



CATCHING PEN DOORS

- Dual catching pen doors, **light weight timber to reduce noise and impact**
- Double action swing for ease of entry and exit
- High enough to baulk sheep, **low enough to avoid contact with shearer's elbows**
- Gap between and below doors to stop feet getting wedged or pinched (sheep and people)
- Rounded corners
- Right hand chute door clear of impact when swung onto board (especially handpiece)



BOARD

- Straight drag from catching pen to workstation – **reduce long-term shearer back, hip and knee strain**
- **Adjustable downtube positioning** towards or away from chute (shearers are different in their positioning)
- Enough room for shed hands to assist shearer and clear away wool
- Timber board division, reduces vision, noise and vibrations
- Non-slip, smooth tongue and groove work area surface, improves sheep handling, impact absorption and wool handling
- Ample room on chute top for shearer's gear
- Power points for each stand



RAISED BOARDS

- Do not kneel to prepare or retrieve fleece
- Can be used as a wool prep table (crutch wool)
- Shearing on a raised surface (rails – can provide an obstacle)
- Handpiece and sheep and working height
- Short and tall people have different difficulties (paddles can mitigate)

FLAT BOARDS

- No raised heights or obstructions
- Easily supported to restrain sheep
- Woolhandlers have access around the fleece
- Need to kneel to prepare or retrieve fleece



Image: Proway Livestock Equipment



CHUTE

- **Wide and recessed** to facilitate easy release
 - 800mm x 800mm
- Vertical '**drop off**' at chute entrance to minimise sheep resistance
- Graduated slope for controlled decent
- Uninterrupted chute exit
- **Vibration free top** for tool storage of shearing accessories (timber or rubber)



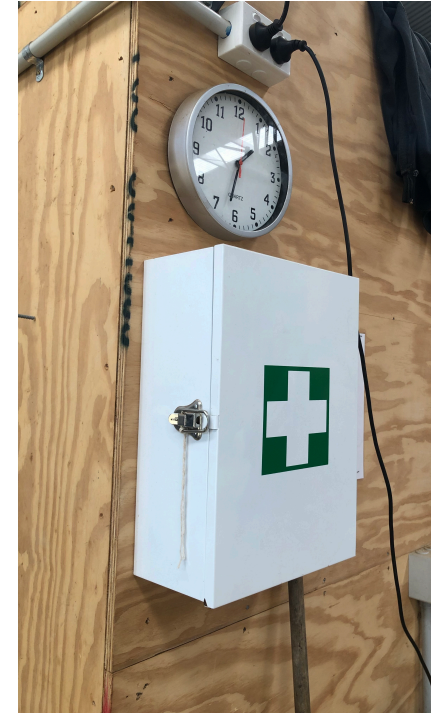
WOOLHANDLING & WOOLROOM

- Even, short distances between stands and wool table
- **Flexible configuration**, portable wool bins, wool table and press(es)
 - Enough space for a second table
- Height adjustable wool tables
- Boarded wool bins (not mesh or similar)
- Load bearing floor to allow press(es) to be moved to suit configuration
- **Consistent well-lit** (white light) woolhandling/classing areas



GENERAL FEATURES

- Minimal unwanted light under shed
- Separate grinding area
- Large windows and a shutter design encouraging air flow
- Air conditioning installed
- Shed safety signage
- First aid kit & fire extinguisher
- Emergency stop buttons (under raised boards)
- Directions, coordinates and contact numbers



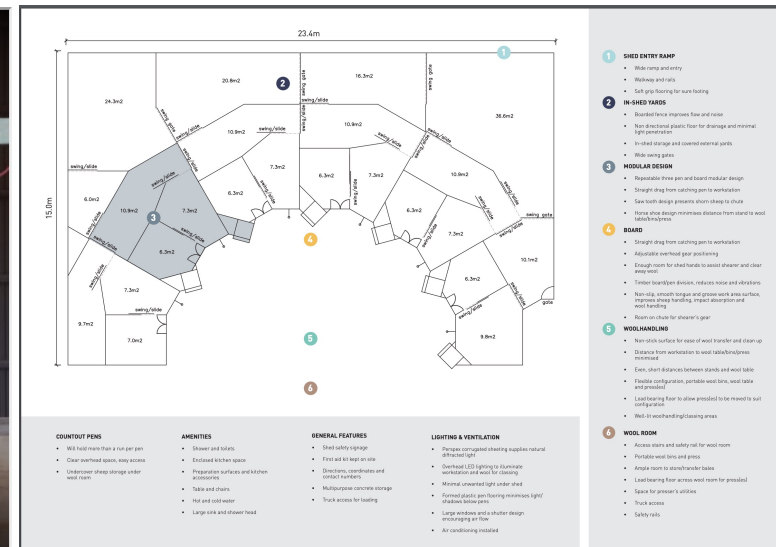
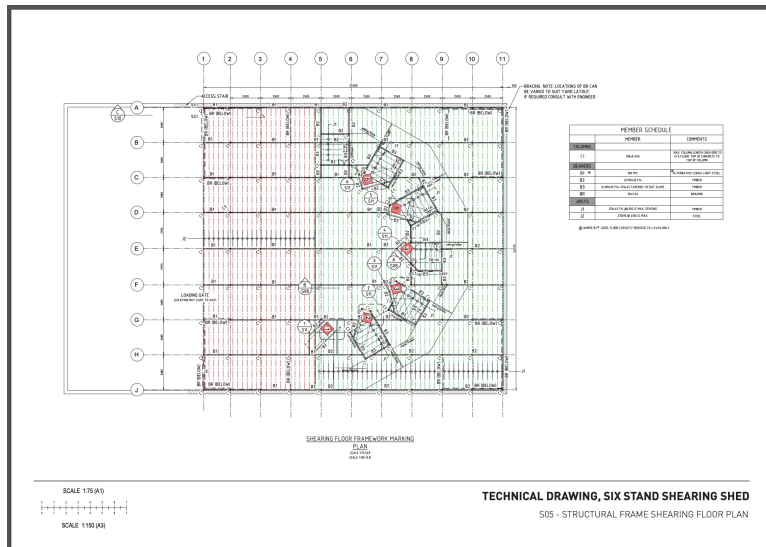
AMENITIES

- Shower and toilets
- Enclosed kitchen space
- Clean preparation surfaces and kitchen accessories
- Table and chairs
- Hot and cold water
- Large sink and shower head





WWW.WOOL.COM/SHEDEDESIGN



Technical engineering drawings

Project overview video

'Arrow Park' floor plan, design features

FIT OUT TIPS:

- Slide/swing gates, limit light below shed
- Catching pen – timber slats parallel to drag (if possible, a slope - if it is already a front fill this can be done)
- Pen doors – consider lower dual timber doors - 50/50, 75/25 (third, barn style door on top to assist if filling is an issue)
- Remove overhead gear for individual electric stands – higher performance and safer (with anti-lock up)

FIT OUT TIPS:

- Chute – wide (600-800mm) with a recess (100-150mm) and vertical drop (100-200mm) at the top the chute
- If the chute is an obstacle in catching pen, fence it off to remove the trip hazard
- Storage – hanging space for tools and a timber/rubber base storage
- Wool room – flexibility for outcomes (adjustable heights, portable)
- Amenities – M/F, deep sinks, hot water, ventilation, lighting, table & chairs

Ask your shed staff and or contractor, they will know your shed!!

SAFESHEDS

- Outline duty of care obligations
- Best practice self assessment guide and checklists
- Identify and assess safety hazards
- Create improvement plans and actions to improve

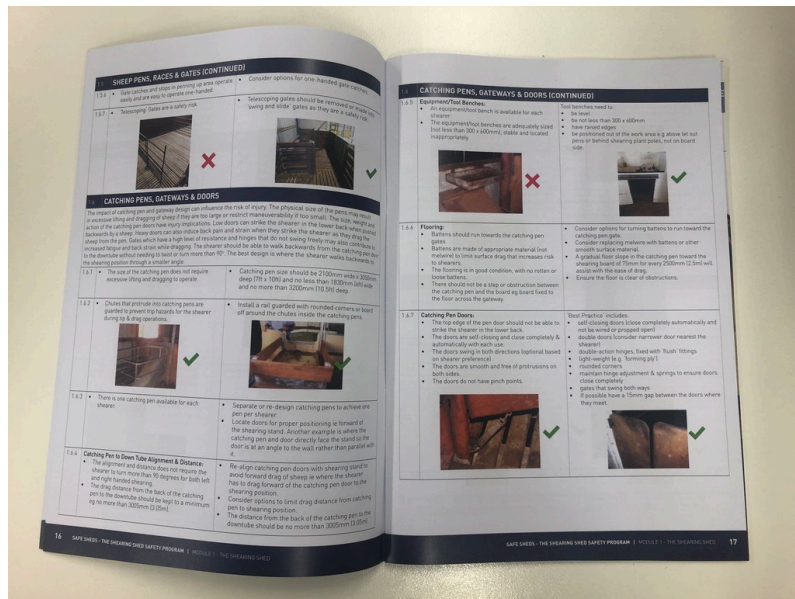


FOUR SECTIONS:

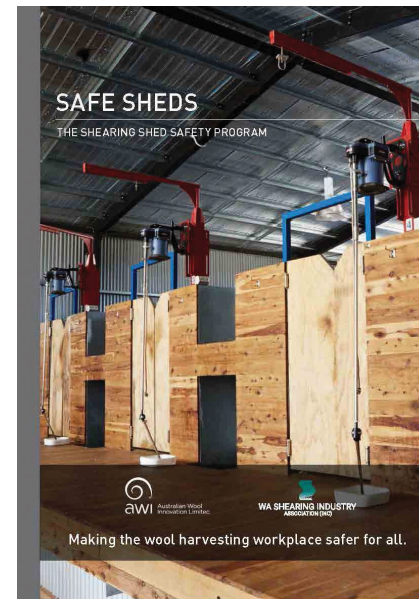
1. Legal obligations of people
2. How to assess and manage the risks
3. Detailed best practice and assessment guide
 - Module 1 – The shearing shed
 - Module 2 – Machinery and equipment
 - Module 3 – Amenities and facilities
 - Module 4 – Work practices
 - Module 5 – General working conditions
4. Assessment Checklists
 - Full assessment
 - Pre-shearing
 - Induction
 - Post shearing



HOW TO FIND SAFESHEDS PROGRAM



Hardcopy – 1800 070 099



Online PDF



Online and mobile App

SAFESHEDS DIGITAL CHECKLIST

1. Mobile app or online (works offline)
2. Take photos and create notes
3. Record and document assessment with date and time stamps
4. Share across multiple accounts (i.e. staff, contractors) and sheds
5. Create formatted reports on actions/completions
6. Incident reporting



SHEARING SHED SAFETY SIGNAGE



Order a Shed Safety signage kit

AWI has sponsored the development and production of the kit and is making it available to woolgrowers at the handling and postage cost of \$25 (including GST) per kit.

The Shed Safety signage kit is only available for delivery within Australia.

[ORDER FORM](#)

THANK YOU

WWW.WOOL.COM/SHEDESIGN

WWW.WOOL.COM/SAFE-SHEDS

AWI is grateful for its funding, which is primarily provided by Australian woolgrowers through a wool levy and by the Australian Government which provides a matching contribution for eligible R&D activities. To the extent permitted by law, Australian Wool Innovation Ltd excludes all liability for loss or damage arising from the use of, or reliance on, the information contained in this presentation.

©2021 Australian Wool Innovation Ltd. All rights reserved.

