



rivers

arteries of the Australian environment

# LandWater & Wool

Shaping the future



Australian Government  
Land & Water Australia

• australian wool  
*another innovation*  
• limited

## Improving water quality to benefit wool production

According to a national survey of 1500 wool growers seventy-eight per cent have properties which adjoin at least one waterway. Of those with waterways, 55 per cent have adopted practices to maintain or improve water quality.

Healthy rivers, creeks and streams are the arteries of the Australian environment – they provide the water to sustain many different plant and animal communities and they are the lifeblood of our agricultural enterprises. Without healthy water bodies, Australia does not have a sustainable future.

Managing these water systems is therefore a key component of running a profitable wool producing enterprise.

To identify new productive and profitable solutions to manage natural resources on farm, Australian Wool Innovation Limited and Land & Water Australia have jointly invested in a unique program, *Land, Water & Wool (LWW)*.

*Land, Water & Wool (LWW)* is a joint investment between the wool industry's peak research and development body, Australian Wool Innovation Limited, and the nation's premier investor in natural resource management research; Land & Water Australia.

**River Management and Water Quality** is one of eight *Land, Water & Wool* programs: The others are:

-  Benchmarking and Evaluation
-  Sustainable Grazing on Saline Land (SGSL)
-  Native Vegetation and Biodiversity
-  Managing climate variability
-  Managing pastoral country
-  Future woolscapes
-  Sustainable Grazing Systems Harvest Year

A key area of research in the *Land, Water & Wool* program is **River Management and Water Quality**. This sub-program will assist wool growers to better manage their rivers and riparian areas and achieve both environmental and productivity goals.

**The River Management and Water Quality** sub-program will research common riparian management issues for wool growers. Some of these issues include gully and streambank erosion, water quality, weed management and riparian zone management within a total grazing system.

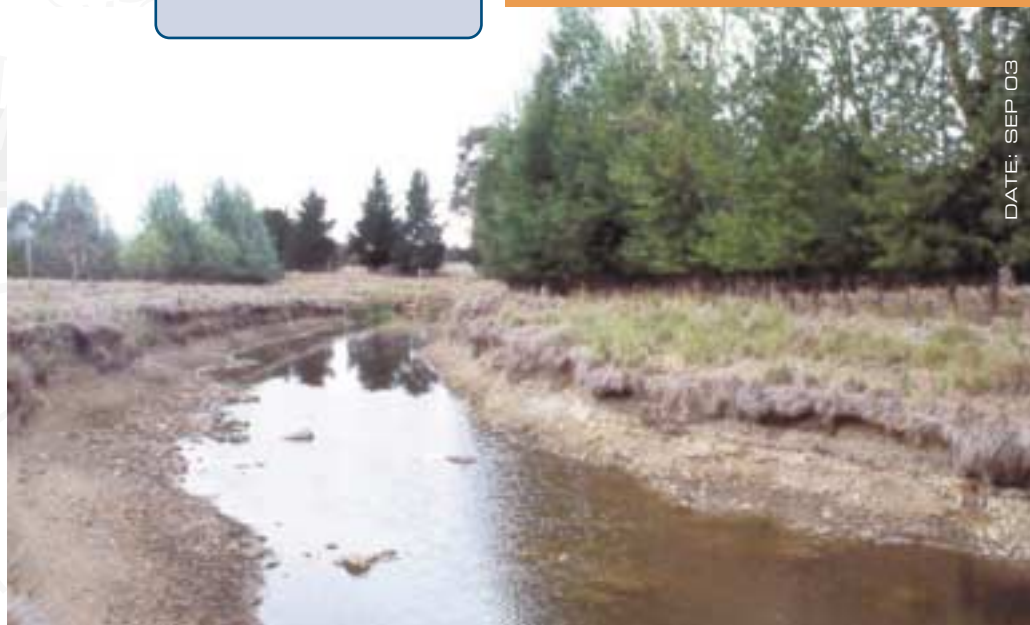
### Riparian

Any land which adjoins or is directly influenced by a body of water. This includes creeks, billabongs, lakes, wetlands and channels that sometimes flood.



Fencing off waterways and creating wider belts of trees has paid dividends for Mike Grogan on the Southern Tablelands of NSW. As a result of changing management strategies, Mike Grogan (above) successfully maintained wethers stocking rates on native pastures through the 2002/03 drought without supplementary feeding.

The wool shorn from wethers grazing on this pasture also attracted 10 per cent price premium over the remainder of the clip for maintaining adequate fibre strength.



DATE: SEP 03



Australian Government  
Land & Water Australia

• australian wool  
*another innovation*  
• limited

## Working with wool growers

*Land, Water & Wool River Management and Water Quality* sub-program has established project sites in the Midlands of Tasmania, Southern Tablelands of NSW and the Mid North region of SA.

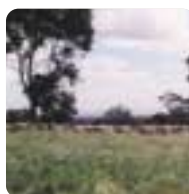
These projects will result in practical methods for improved river and riparian management that wool growers can incorporate into their farming systems.

Over the next five years, wool growers, leading researchers, Landcare, local government and community groups will work together to achieve the following objectives for the program:

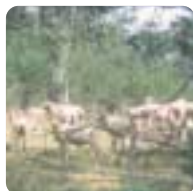
- an **understanding** of the issues facing wool growers when managing streams, creeks and riparian lands;
- **improved** awareness, understanding and knowledge of practical methods for river management and water quality;
- **develop** practical and cost-effective methods and guidelines for river management that can be used by the wool industry;
- **involve** wool growers in research and information sharing;
- **measure** improvement in stream condition and water quality in wool growing regions where demonstration sites have been established; and,
- **enable** the wool industry to be recognised as a sound environmental manager with best practice methods included in farm management systems.



Southern Tablelands  
NSW



Mid North  
SA



Midlands Tasmania

Research sites for the LWW Rivers and Water Quality sub-program are established in Midlands Tasmania, Southern Tablelands Yass NSW and Mid North, SA.

For further information contact:

### Dr Siwan Lovett

River Management and Water Quality  
Sub-Program Coordinator  
GPO Box 2182  
CANBERRA ACT 2601  
Tel: 02 6257 3379  
Email [siwan.lovett@lwa.gov.au](mailto:siwan.lovett@lwa.gov.au)

### Fleur Flanery

Communication  
*Land, Water & Wool*  
GPO Box 2182  
Canberra ACT 2601  
Tel, (02) 6263 6020  
E-mail: [fleur.flanery@lwa.gov.au](mailto:fleur.flanery@lwa.gov.au)

Order information on *Land, Water & Wool Rivers and Water Quality* projects:

- **Tasmanian wool - natural landscapes, natural fibres** PF 030 527
- **Preventing erosion to maximise wool production** PF 030 530



To order by telephone  
freecall 1800 776 616 or telephone (02) 6295 4444.



Order online  
[lwa@canprint.com.au](mailto:lwa@canprint.com.au)

Search our online catalogue at [www.lwa.gov.au](http://www.lwa.gov.au) and follow the link to 'Publications', where you can either order online or print an order form.



or post to  
CanPrint Communications  
PO Box 7456  
Canberra MC  
ACT 2610

Look for other relevant fact sheets on riparian restoration: [www.rivers.gov.au](http://www.rivers.gov.au)

- Managing riparian land
- Streambank stability
- Improving water quality
- Maintaining in-stream life
- Managing stock
- Managing woody debris in rivers
- Inland rivers and floodplains
- Planning for river restoration
- River flows and blue-green algae
- Managing phosphorus in catchments

Visit us on-line at  
[www.landwaterwool.gov.au](http://www.landwaterwool.gov.au)

